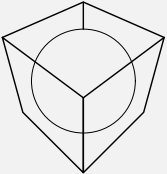


ARCHISPACE Sh.p.k



STUDIO-REBUS Sh.p.k

OBJEKTI

PERGATITJA E PROJEKT-ZBATIMIT DHE SUPERVIZIONIT PER AGJENCIE E OFRIMIT TE SHERBIMEVE PUBLIKE TE INTEGRUARA, KOMBINAT, TIRANE. REF. AL-8521-CS/CQ/2.05.08

EMERTIMI I FLETES

KONSTRUIMI I ARKITRAREVE B/A METODOLOGJIA E VENDOSJES TE RAMAVE SHKALLA

NUMRI I FLETES

SH 1: 75,25

K-02

FINANCIMI

AGJENCIA E OFRIMIT TË SHËRBIMEVE PUBLIKE TË INTEGRUARA.

ADISA

AGENCY FOR THE DELIVERY OF INTEGRATED SERVICES IN ALBANIA

GRUPI I PROJEKTIMIT

ARCHISPACE Sh.p.k

Lic. Nr. N.6732/6

STUDIO-REBUS Sh.p.k

Lic. Nr. N-5486/5

ARK. RAIS PETRELA
ARK. LORENA ALIA
ARK. OLSI AHMETAJ
ARK. LINDA LOKA
ARK. REDMAN TOSKA
ARK. ILIRJANA BOZO
ARK. KELINA GEGA
ARK. DRITAN PAPAVASILI
ARK. GENTIAN TOPCIU
ING. ARMAND SHEHU
ING. NIKOLIN RISILIA
ING. ARTUR DADO
ING. MARIO FISHTA

PERFITUESI

AGJENCIA E OFRIMIT TË SHËRBIMEVE PUBLIKE TË INTEGRUARA

ADISA

AGENCY FOR THE DELIVERY OF INTEGRATED SERVICES IN ALBANIA

ARCHISPACE Sh.p.k - STUDIO-REBUS Sh.p.k

Te gjitha materialet qe serviren ne kete projekt / faqe jane origjinale dhe cdo riprodhim i tyre ne cdo forme pa pelqimin tone konsiderohet shkelje ligjore. Jeni te lutur qe te gjitha pa perjashtim te respektoni te drejtat e autorit. Ne respektojme te drejten e autorit dhe per cdo material te huazuar kemi dhene kreditet e duhura autorit. Qe te kopjoni materialet tona, duhet te merrni pelqimin e ARCHISPACE shpk dhe STUDIO-REBUS shpk.



**THE PREPARATION OF DETAILED DESIGN
AND SUPERVISION FOR INTEGRATED
SERVICE DELIVERY CENTER KOMBINAT,
TIRANE.
REF. AL-8521-CS/CQ/2.05.08**

REINFORCING PLAN OF GROUND FLOOR DESIGN OF RCC ELEMENTS

SH 1:100 **K-01**

AGENCY FOR THE DELIVERY OF
INTEGRATED SERVICES IN
ALBANIA
ADISA

ARK. RAIS PETRELA
ARK. LORENA ALIA
ARK. OLSI AHMETAJ
ARK. LINDA LOKA
ARK. REDMAN TOSKA
ARK. ILIRJANA BOZO
ARK. KELINA GEGA
ARK. DRITAN PAPAVASILI
ARK. GENTIAN TOPCIU
ING. ARMAND SHEHU
ING. NIKOLIN RISILIA
ING. ARTUR DADO
ING. MARIO FISHTA

AGENCY FOR THE DELIVERY OF
INTEGRATED SERVICES IN
ALBANIA
ADISA

ARCHISPACE L.t.d - STUDIO-REBUS L.t.d

All materials that served in the project / pages are original and their every reproduction in any form without our consent is considered a breach legal. Are you pleased that all without exception to respect rights copyright. We respect copyright and for any material borrowed credits have given appropriate copyright. To copy our material need to get consent with ARCHISPACE L.t.d and STUDIO-REBUS L.t.d.

TIRANE 2018

The architectural floor plan shows a building layout with several rooms and corridors. Key features include:

- Rooms and Dimensions:**
 - Top left room: 660 (width) x 144 (depth).
 - Top middle room: 551 (width) x 219 (depth).
 - Top right room: 678 (width) x 219 (depth).
 - Middle left room: 660 (width) x 172 (depth).
 - Middle middle room: 551 (width) x 170 (depth).
 - Middle right room: 678 (width) x 170 (depth).
 - Bottom left room: 660 (width) x 357 (depth).
 - Bottom middle room: 551 (width) x 170 (depth).
 - Bottom right room: 678 (width) x 357 (depth).
- Labels and Notes:**
 - Mure mbajtëse:** Retaining wall.
 - Arkitra:** Architrave.
 - Trare ekzistues qe del nga soleta ekzistuese 30 cm dhe me gjerësi 20 cm:** Existing transom door from the existing 30 cm wide and 20 cm high opening.
 - Dere e mbyllur nga ndërrimi parapirake ne objekt:** Closed door from the existing opening in the object.
- Staircase:** Located in the middle right section, with dimensions 12x15x32.
- Section Lines:** A-A and B-B are indicated across the plan.

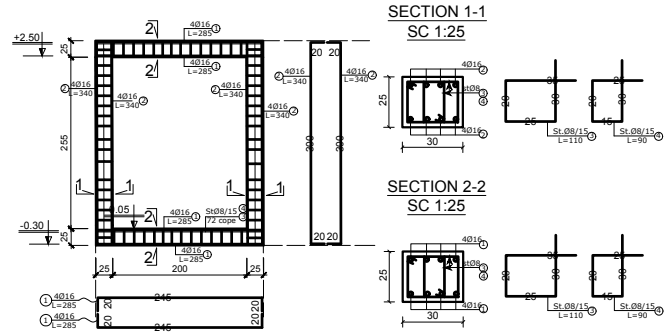
The diagram shows a horizontal sheet of material with a total width of 4020 mm and a total length of 551 mm. The width is divided into five sections: 171 mm, 20 mm, 171 mm, 20 mm, and 170 mm. Vertical red lines indicate the cut positions for these sections. The 170 mm section is the final piece on the right.

Technical drawing of a bridge cross-section. The drawing shows a single-span bridge with a central pier. The pier is labeled "Soletë kesore" (pier) and "Muri i hequr" (pier wall). The bridge deck is labeled "Mur mbajtës" (support wall). The pier height is dimensioned as 310, and the bridge deck width is dimensioned as 400.

[illegible]

REBAR TABLE FOR RC ELEMENTS										
Elem	PC	N	Dim s	L (m)	Pc	L (m)	Re element			Total kg
			Dim s				Dim L (m)	Ng		
A/TES-1	1	1	16	265	8	23.2	16	144.0	79	79
		2	16	340	8	27.2	8	144.0	57	57
		3	8	110	72	79.2				
		4	8	90	72	64.8				
							Heurist	136	136	
A/TES-2	1	1	20	555	10	55.5	20	55.5	137	137
		2	14	445	4	17.8	10	224.0	363	363
		3	16	360	20	76.0	14	17.8	21	21
		4	16	514	3	45.4	8	2306	83	83
		5	8	240	30	57.0				
		6	8	190	30	57.0				
		7	8	66	30	18.8				
		8	8	110	28	42.8				
		9	10	90	48	43.2				
		10	16	36	48	17.3				
		11	16	140	28	36.2				
		12	8	125	28	36.0				
							Heurist	605	605	
A/TES-3	1	1	16	345	8	27.6	16	54.8	88	88
		2	16	340	8	27.2	8	100.0	83	83
		3	8	110	80	88.0				
		4	8	90	80	72.0				
									Heurist	150
A/TES-4	1	1	16	305	8	26.2	10	56.4	89	89
		2	16	340	8	27.2	8	108.0	66	66
		3	8	110	64	64.4				
		4	8	90	64	56.6				
							Heurist	155	155	
A/TES-5	4	1	12	215	8	17.2	12	34.4	31	122
		2	12	215	8	17.2	8	12.1	5	149
		3	8	110	11	12.1				
							Heurist	35	141	

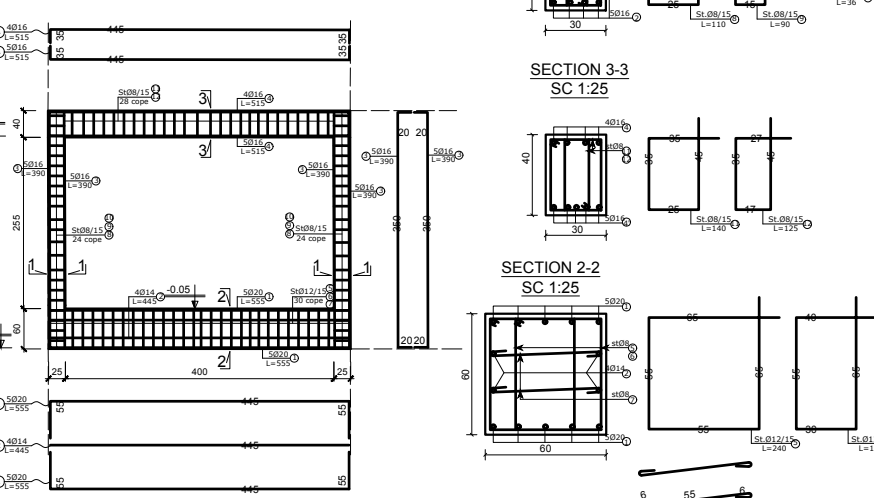
R/C ELEMENT A/Tr-1 SC1:50



SECTION 1-1
SC 1:25

SECTION 2-2
SC 1:25

R/C ELEMENT A/Tr-2 SC1:50

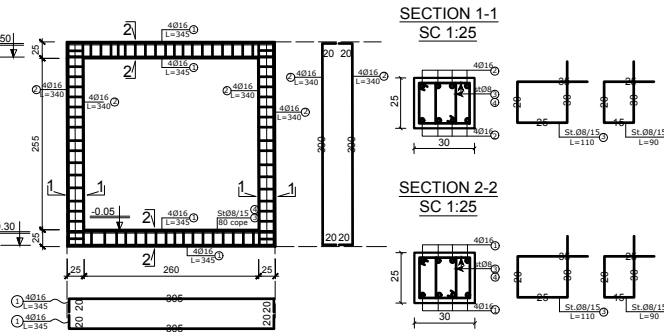


SECTION 1-1
SC 1:25

SECTION 3-3
SC 1:25

SECTION 2-2
SC 1:25

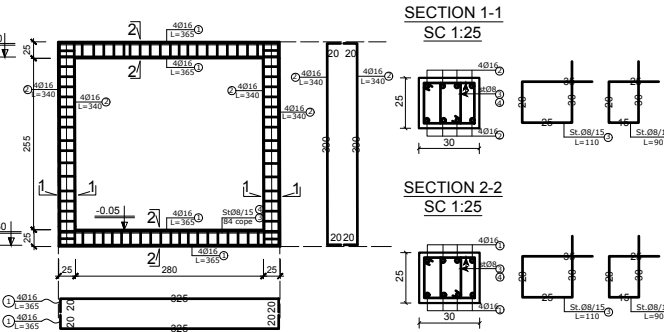
R/C ELEMENT A/Tr-3 SC1:50



SECTION 1-1
SC 1:25

SECTION 2-2
SC 1:25

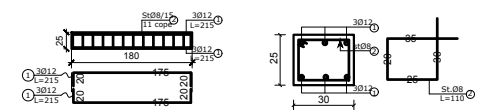
R/C ELEMENT A/Tr-4 SC1:50



SECTION 1-1
SC 1:25

SECTION 2-2
SC 1:25

R/C ELEMENT A/Tr-5 SC1:50



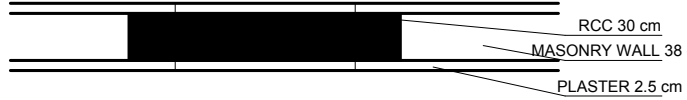
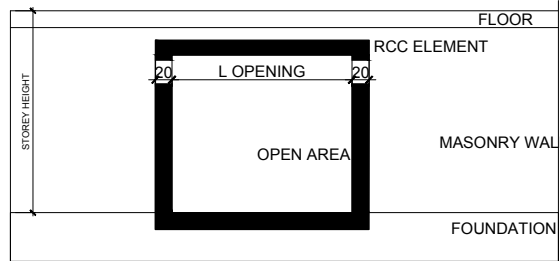
TECHNICAL NOTE:

R/C ELEMENTS FROM 180 CM UNTIL 80 CM SHOULD BE LIKE A/Tr-5.

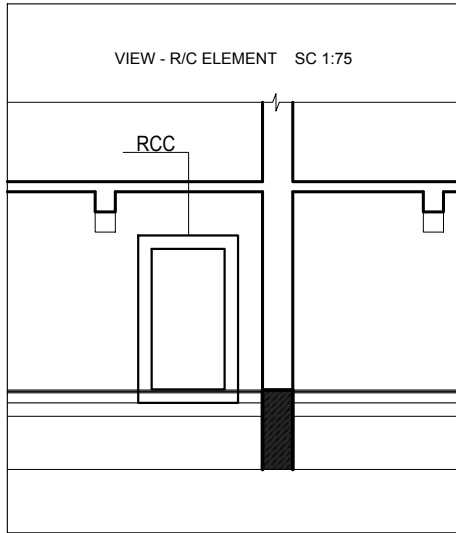
R/C ELEMENTS SHOULD BE FIXED 15 UNTIL 20 CM IN STRUCTURAL WALL.

R/C ELEMENTS SHOULD BE POSITIONED ACCORDING TO ARCHITECTURE LAYOUTS.

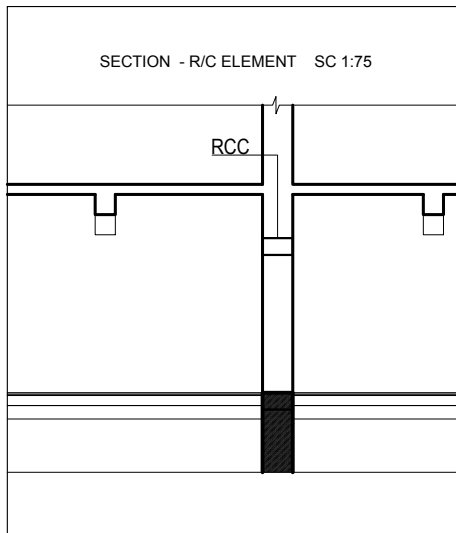
DETAIL OF RCC ELEMENTS
SC 1:75



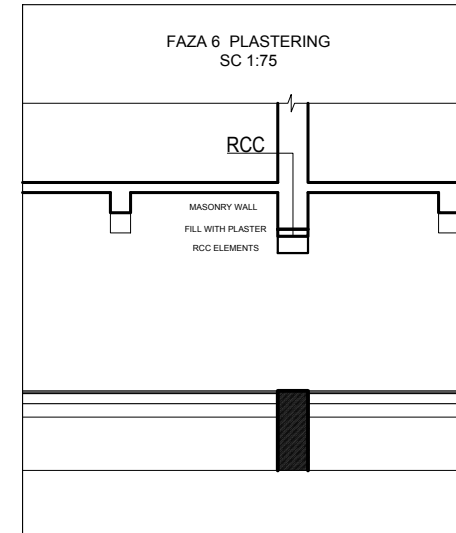
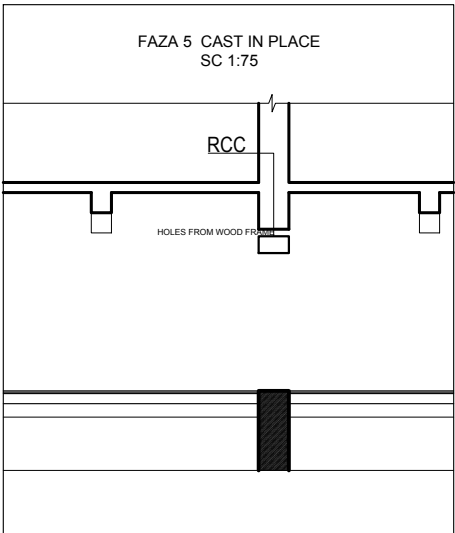
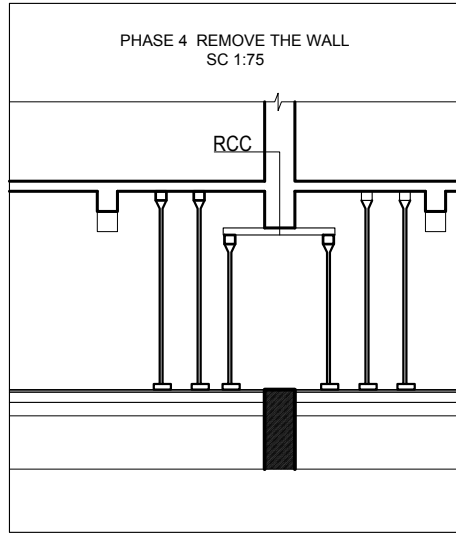
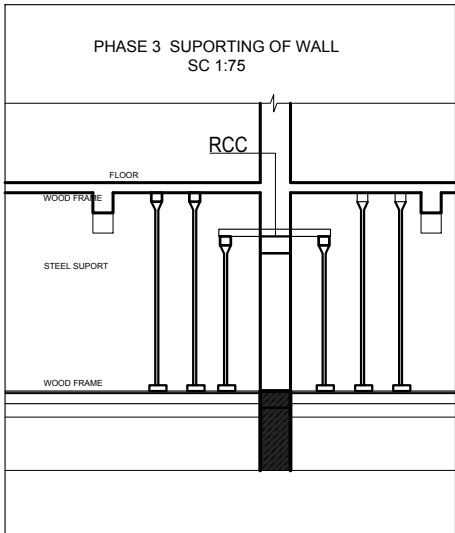
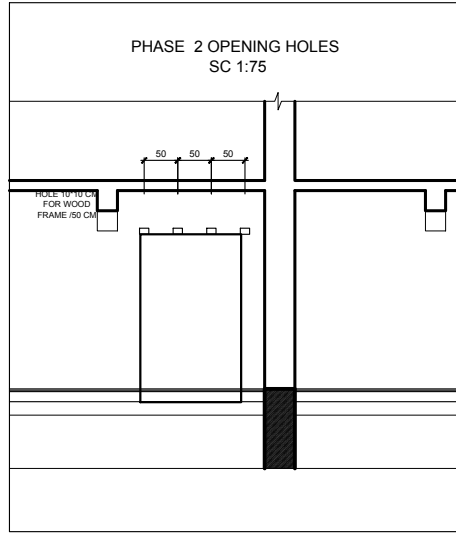
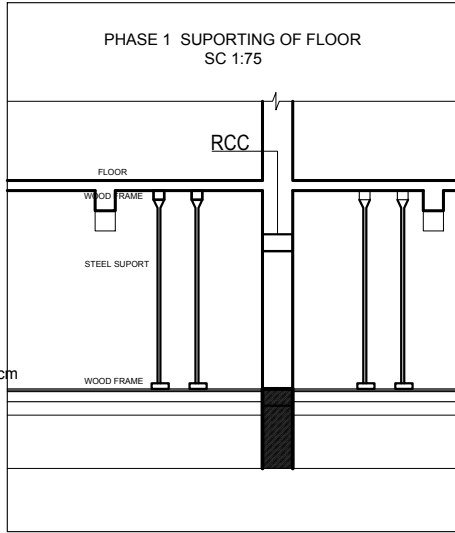
VIEW OF RCC ELEMENTS
SC 1:75



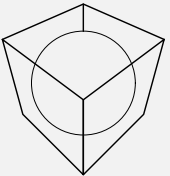
SECTION - R/C ELEMENT SC 1:75



PHASES OF CONSTRUCTION OF RCC ELEMENTS
SC 1:75



ARCHISPACE L.t.d



STUDIO-REBUS L.t.d

PROJECT

THE PREPARATION OF DETAILED DESIGN AND SUPERVISION FOR INTEGRATED SERVICE DELIVERY CENTER KOMBINAT, TIRANE.
REF. AL-8521-CS/CQ/2.05.08

LAYOUT

PHASES OF CONSTRUCTION OF RCC ELEMENTS

SCALE

DRAWING NUMBER

SH 1:75

K-02

FINANCING

AGENCY FOR THE DELIVERY OF INTEGRATED SERVICES IN ALBANIA
ADISA

DESIGN GROUP

ARCHISPACE L.t.d

Lic. Nr. N.6732/6

STUDIO-REBUS L.t.d

Lic. Nr. N-5486/5

ARK. RAIS PETRELA
ARK. LORENA ALIA
ARK. OLSI AHMETAJ
ARK. LINDA LOKA
ARK. REDMAN TOSKA
ARK. ILIRJANA BOZO
ARK. KELINA GEGA
ARK. DRITAN PAPAVASILI
ARK. GENTIAN TOPCIU
ING. ARMAND SHEHU
ING. NIKOLIN RISILIA
ING. ARTUR DADO
ING. MARIO FISHTA

BENEFICIARIES

AGENCY FOR THE DELIVERY OF INTEGRATED SERVICES IN ALBANIA
ADISA

ARCHISPACE L.t.d - STUDIO-REBUS L.t.d

All materials that served in the project / pages are original and their every reproduction in any form without our consent is considered a breach legal. Are you pleased that all without exception to respect rights copyright. We respect copyright and for any material borrowed credits have given appropriate copyright. To copy our material need to get consent with ARCHISPACE L.t.d and STUDIO-REBUS L.t.d.

TIRANE 2018