

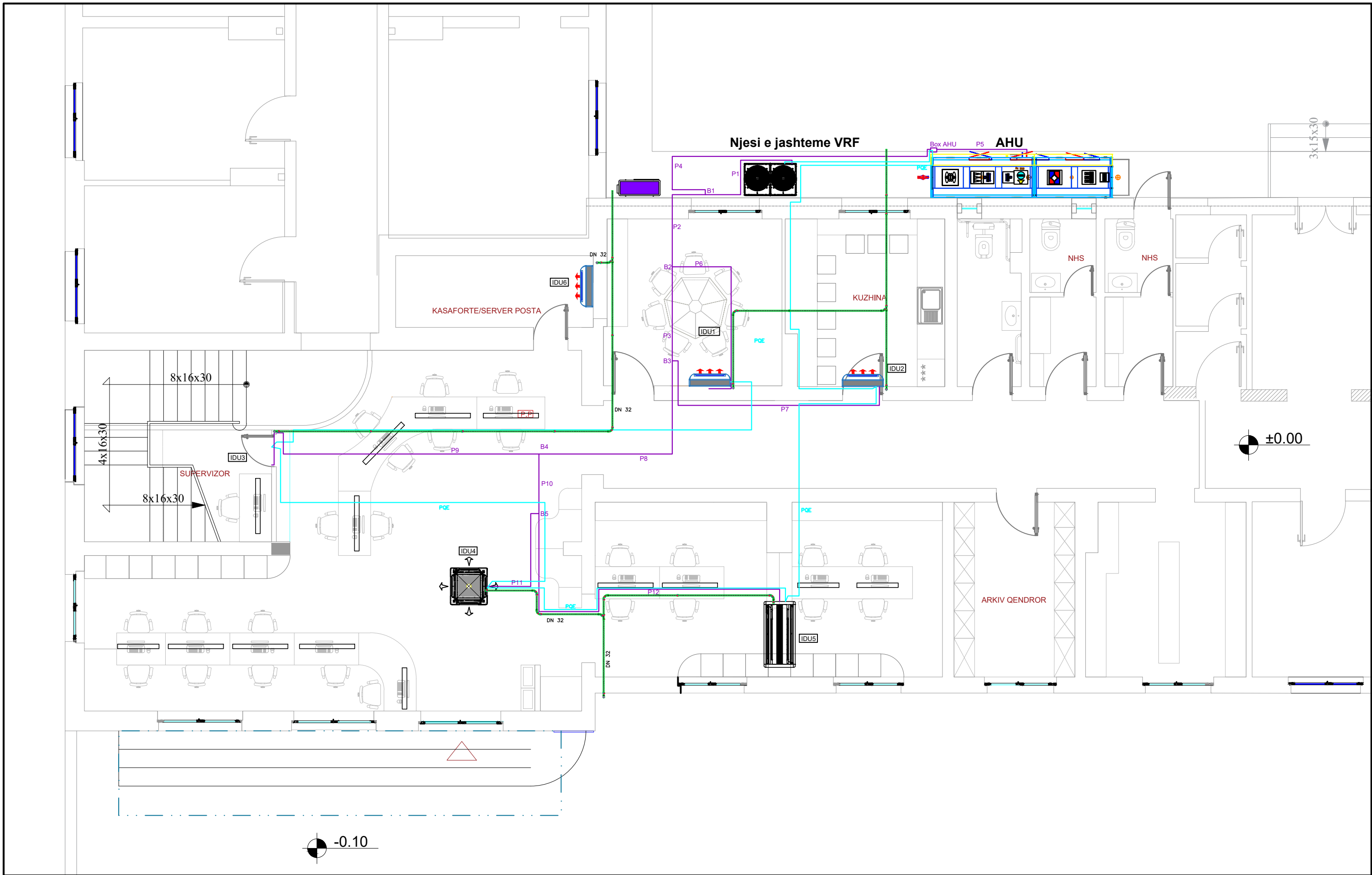
**Porosites:**  
**ADISA -Agjencia e Ofritit të Shërbimeve Publike të Integruara**

**InfraKonsult**  
 konsulence inzhinierike  
 Address: Rr. "Qemal Stafa", P.25, Ap. 4,hyrja 4, perballë Qendres Lincoln  
 Mob:+355 (0)68 90 10 844 / +355 (0)69 40 17 013  
 E-mail: infrikonsult@yahoo.com  
 RR "SAMI FRASHERI", PALI T.D.BALLKAN, SH1, AP.2, TIRANA, ALBANA  
 ATELIER 4 STUDIO ARKITEKTURE  
 Tel: +355 4 22 22 884 / +355 4 24 30 195  
 Fax: +355 4 24 30 194  
 email: info@atelier4.al  
 www.atelier4.al

"HARTIMI I PROJEKT ZBATIMIT TE RIKONSTRUKSIONIT TE QENDRES SE OFRIMIT TE SHËRBIMEVE PUBLIKE TE INTEGRUARA NE LUSHNJE"  
 SHPERNDARJA E KANALEVE TE AJRIT

FAZA - PROJEKT ZBATIMI  
 SHKALLA 1: 100      Data: Qershor, 2019  
 VIZATIMI Nr: D\_(61)

DREJTOR PROJEKTI: Ing. Sulejman Shemsiu  
 PROJEKTUES:  
 Ing. Redi STRUGA  
 Ing. Sokol METOJA  
 Ing. Helidon Osmanaj  
 Ing. Agim Tabaku  
 Ark. Irida Totri  
 Ark. Lorena Mezin



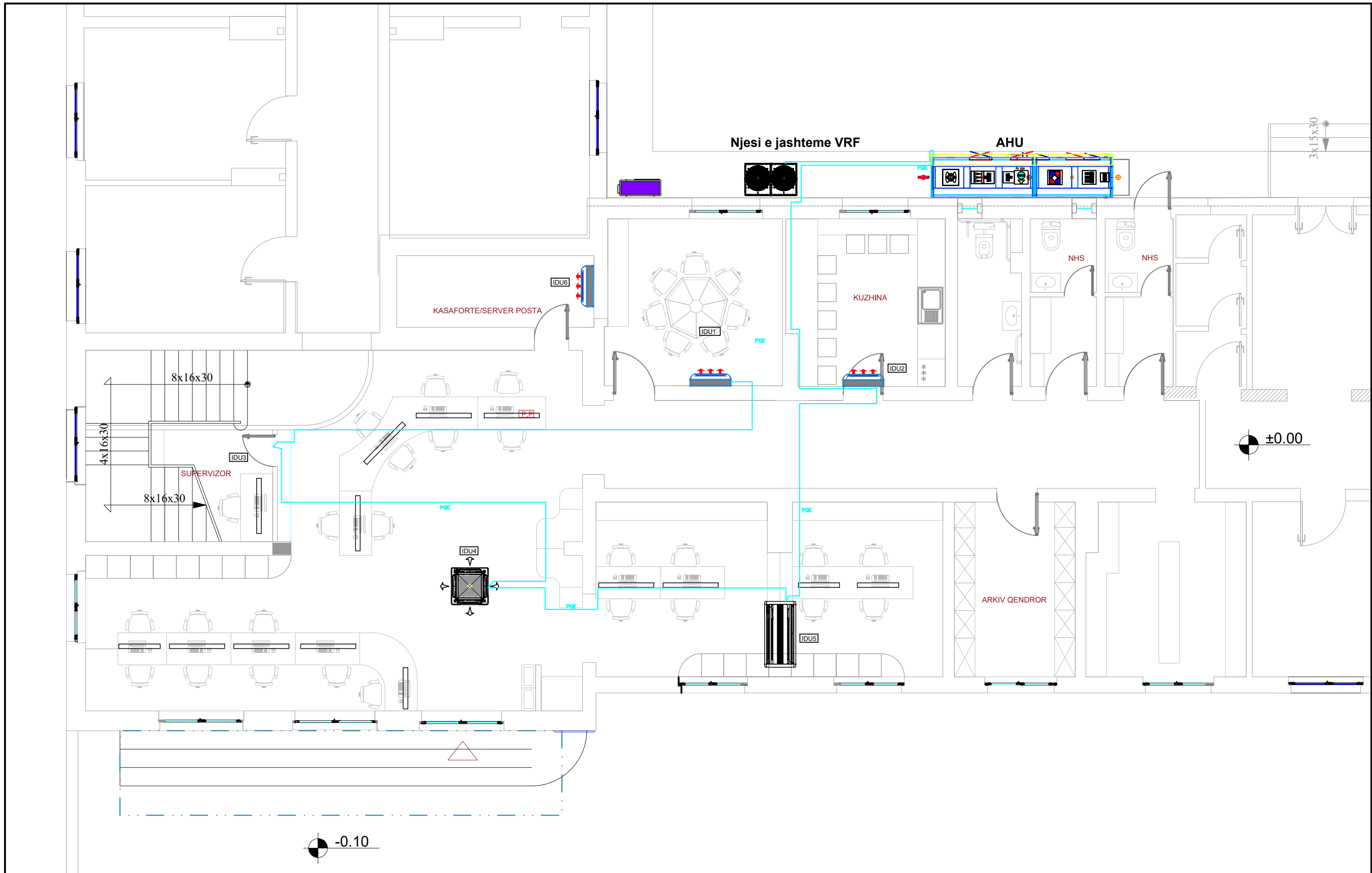
**Porosites:**  
**ADISA -Agjencia e Ofrimit të Shërbimeve Publike të Integruara**

**InfraKonsult**  
 konsulence inzhinierike  
 Address: Rr. "Qemal Stafa", P.25, Ap. 4,hyrja 4, perballë Qendres Lincoln  
 Mob:+355 (0)68 90 10 844 / +355 (0)69 40 17 013  
 E-mail: infrakonsult@yahoo.com  
 RR "SAMIR FRASHERI", P.M. T.I.D.BALLKAN, SH1, AP.2, TIRANA, ALBANA  
 Tel: +355 4 22 22 884 / +355 4 24 30 195  
 Fax: +355 4 24 30 194  
 email: info@studio4.com.al  
 www.studio4.com.al

"HARTIMI I PROJEKT ZBATIMIT TE RIKONSTRUKSIONIT TE QENDRES SE OFRIMIT TE SHERBIMEVE PUBLIKE TE INTEGRUARA NE LUSHNJE"  
 SHPERNDARJA E TUBACIONEVE TE BAKRIT DHE KONDENSES

FAZA - PROJEKT ZBATIMI  
 SHKALLA 1: 100      Data: Qershor, 2019  
 VIZATIMI Nr: D\_(62)

DREJTOR PROJEKTI: Ing. Sulejman Shemsiu  
 PROJEKTUES:  
 Ing. Redi STRUGA  
 Ing. Sokol METOJA  
 Ing. Helidon Osmanaj  
 Ing. Agim Tabaku  
 Ark. Irida Totri  
 Ark. Lorena Mezini



**Porosites:**  
**ADISA -Agjencia e Ofrimit të Shërbimeve Publike të Integruara**

**InfraKonsult**  
 konsulence inzhinierike  
 Adresa: Rr. "Qemal Stafa", P.25, Ap. 4,hyrja 4, perballë Qendres Lincoln  
 Mob:+355 (0)68 90 10 844 / +355 (0)69 40 17 013  
 E-mail: inftrakonsult@yahoo.com  
 RR "SAMI FRASHERI", P.M. T.D.BALLKAN, SH1, AP.2, TIRANA, ALBANA  
 Tel: +355 4 22 22 884 / +355 4 24 30 195  
 Fax: +355 4 24 30 194  
 email: info@atelier4.it  
 www.atelier4.it

"HARTIMI I PROJEKT ZBATIMIT TE RIKONSTRUKSIONIT TE QENDRES SE OFRIMIT TE SHERBIMEVE PUBLIKE TE INTEGRUARA NE LUSHNJE"  
 LIDHJA E KOMUNIKIMIT TE PAISJEVE VRF

FAZA - PROJEKT ZBATIMI  
 SHKALLA 1: 100      Data: Qershor, 2019  
 VIZATIMI Nr: D\_(63)

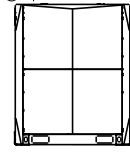
DREJTOR PROJEKTI: Ing. Sulejman Shemsiu  
 PROJEKTUES:  
 Ing. Redi STRUGA  
 Ing. Sokol METOJA  
 Ing. Helidon Osmanaj  
 Ing. Agim Tabaku  
 Ark. Irida Totri  
 Ark. Lorena Mezini

# Piping Diagram

ODU: 39.25/42.42 kW

IDU Total: 38.33/--/41.66 kW

ODU1



P1  $\phi 1-1/8, \phi 1/2$

B1

P2  $\phi 7/8, \phi 3/8$

B2

P3  $\phi 7/8, \phi 3/8$

B3

P8  $\phi 3/4, \phi 3/8$

B4

P10  $\phi 3/4, \phi 3/8$

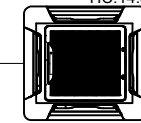
B5

P12  $\phi 1/2, \phi 1/4$

IDU5 TC:4.30 kW/SC:2.72 kW  
HC:4.72 kW



IDU4 TC:13.54 kW/SC:8.56 kW  
HC:14.31 kW



P11  $\phi 5/8, \phi 3/8$

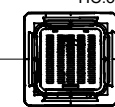
IDU3 TC:2.13 kW/SC:1.43 kW  
HC:2.30 kW



IDU2 TC:2.73 kW/SC:1.82 kW  
HC:3.08 kW



IDU1 TC:3.53 kW/SC:2.31 kW  
HC:3.88 kW



12.00 kW(11.77 kW)

AHU  
AHU-1

AHUKZ-01

P5  $\phi 3/8$

P4  $\phi 5/8, \phi 3/8$

P6  $\phi 1/2, \phi 1/4$

P7  $\phi 1/2, \phi 1/4$

P9  $\phi 1/2, \phi 1/4$

## Branch list

SYMBOL	MODEL
B1	BJF-710-CM(i)
B2	BJF-330-CM(i)
B3	BJF-330-CM(i)
B4	BJF-224-CM(i)
B5	BJF-224-CM(i)

## Pipe list

SYMBOL	LIQUID	GAS	LENGTH
P1	$\phi 1/2$	$\phi 1-1/8$	3.0m
P2	$\phi 3/8$	$\phi 7/8$	3.5m
P3	$\phi 3/8$	$\phi 7/8$	2.0m
P4	$\phi 3/8$	$\phi 5/8$	8.0m(Connect to IDU/3.0m)
P5	$\phi 3/8$	$\phi 5/8$	3.0m
P6	$\phi 1/4$	$\phi 1/2$	2.1m
P7	$\phi 1/4$	$\phi 1/2$	6.0m
P8	$\phi 3/8$	$\phi 3/4$	3.0m
P9	$\phi 1/4$	$\phi 1/2$	6.0m
P10	$\phi 3/8$	$\phi 3/4$	5.0m
P11	$\phi 3/8$	$\phi 5/8$	2.5m
P12	$\phi 1/4$	$\phi 1/2$	9.0m



**Porosites:**  
**ADISA -Agjencia e Ofrimit të Shërbimeve Publike të Integruara**



**InfraKonsult**  
konsulencë inzhinierike  
Address: Rr. "Qemal Stafa", P.25, Ap. 4,hyrja 4, perballë Qendres Lincoln  
Mob:+355 (0)68 90 10 844 / +355 (0)69 40 17 013  
E-mail: infrikonsult@yahoo.com

RR "SAMË FRASHËRI", P.M. T.D.BALLKAN, SH1, AP.2, TIRANA, ALBANA  
Nr. +355 4 22 22 554 / +355 4 24 30 195  
Fax: +355 4 22 22 554  
email: info@studio4.com  
www.studio4.com

"HARTIMI I PROJEKT ZBATIMIT TE RIKONSTRUKSIONIT TE QENDRES SE OFRIMIT TE SHËRBIMEVE PUBLIKE TE INTEGROJARA NE LUSHNJE"

SKEMA E TUBACIONEVE TE BAKRIT DHE DIMENSIONIMI I TYRE

FAZA - PROJEKT ZBATIMI

SHKALLA 1: 100

Data: Qershor, 2019

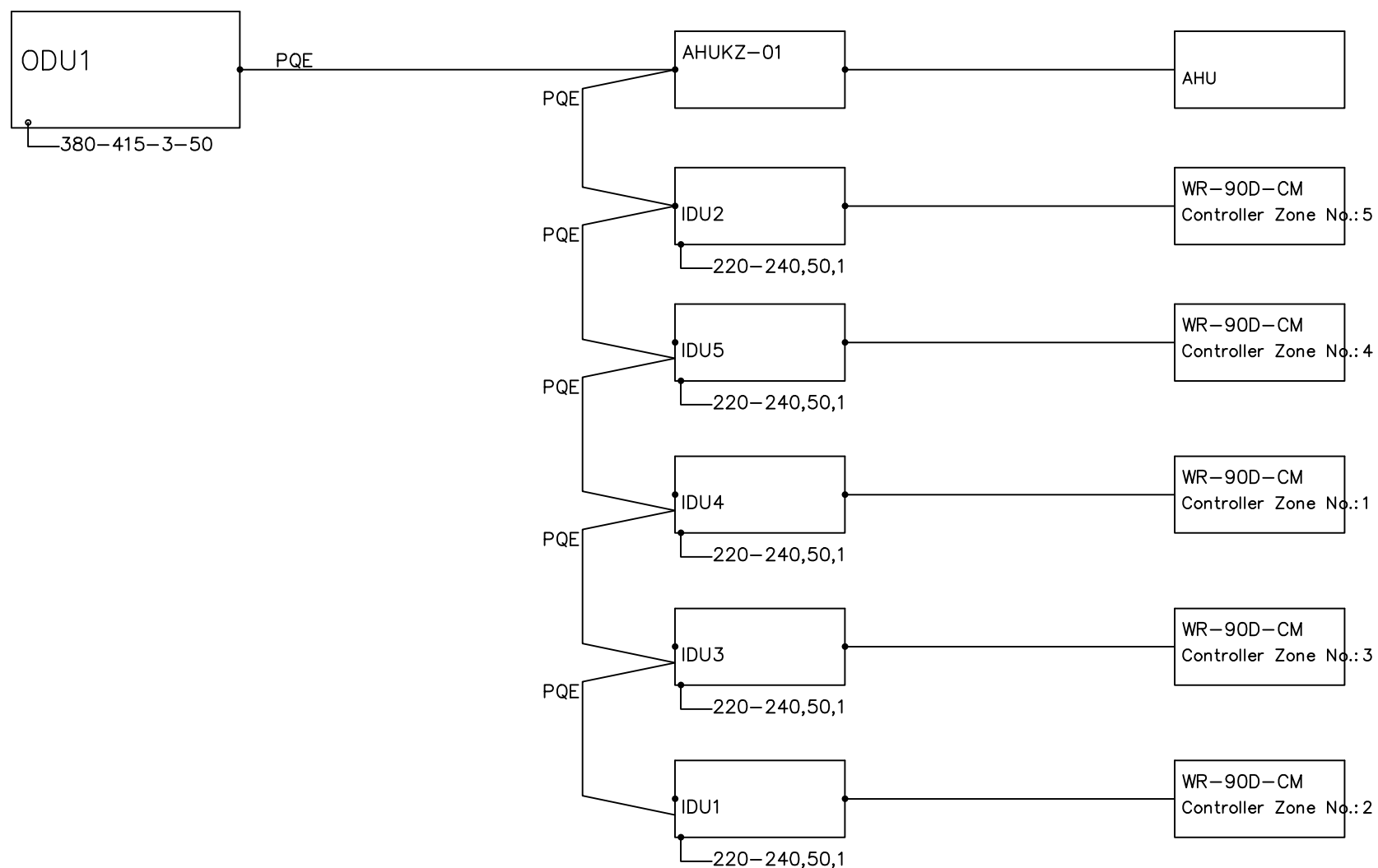
VIZATIMI Nr: D\_(64)

DREJTOR PROJEKTI: Ing. Sulejman Shemsiu

PROJEKTUES:

Ing. Redi STRUGA  
Ing. Sokol METOJA  
Ing. Helidon Osmanaj  
Ing. Agim Tabaku  
Ark. Irida Totri  
Ark. Lorena Mezini

# Wiring Diagram



**Porosites:**  
**ADISA -Agjencia e Ofrimit të Shërbimeve Publike të Integruese**



**InfraKonsult**  
 konsulence inzhinierike  
 Address: Rr. "Qemal Stafa", P.25, Ap. 4,hyrja 4, perballë Qendres Lincoln  
 Mob:+355 (0)68 90 10 844 / +355 (0)69 40 17 013  
 E-mail: infrikonsult@yahoo.com

RR "SAMI FRASHERI", PALI T.D.BALLKAN, SH1, AP.2, TIRANA, ALBANA  
 Nr. +355 4 22 22 584 / +355 4 24 30 195  
 Fax: +355 4 24 30 194  
 email: info@genet.al  
 www.genet.al

"HARTIMI I PROJEKT ZBATIMIT TE RIKONSTRUKSIONIT TE QENDRES SE OFRIMIT TE SHERBIMEVE PUBLIKE TE INTEGRUARA NE LUSHNJE"  
 SKEMA E LIDHJES SE KOMUNIKIMIT TE PAISJEVE VRF

FAZA - PROJEKT ZBATIMI

SHKALLA 1: 100      Data: Qershor, 2019

VIZATIMI Nr: D\_(65)

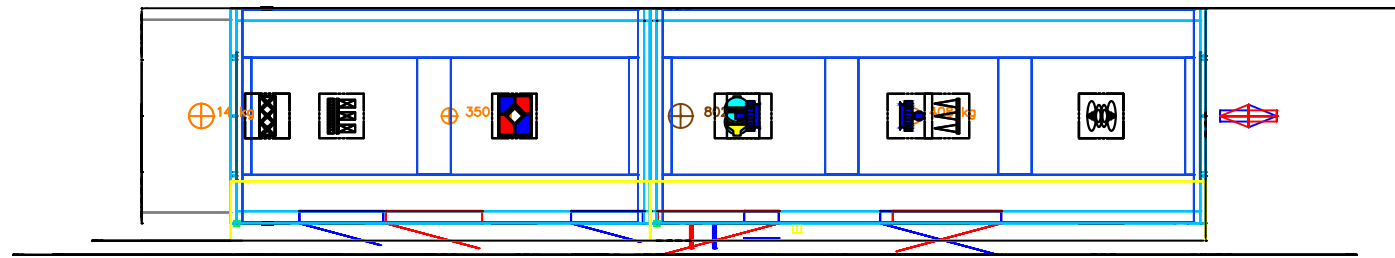
DREJTOR PROJEKTI: Ing. Sulejman Shemsiu

PROJEKTUES:

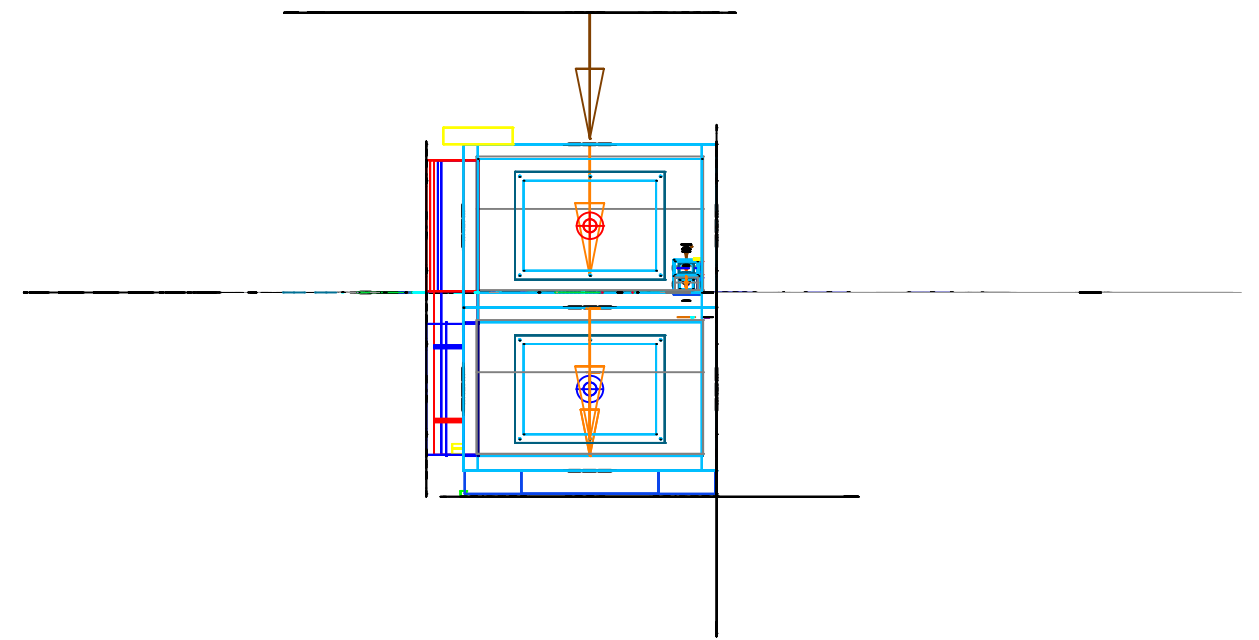
Ing. Redi STRUGA  
 Ing. Sokol METOJA  
 Ing. Helidon Osmanaj  
 Ing. Agim Tabaku  
 Ark. Irida Totri  
 Ark. Lorena Mezin

# Kompozimi i seksioneve te ahu- se

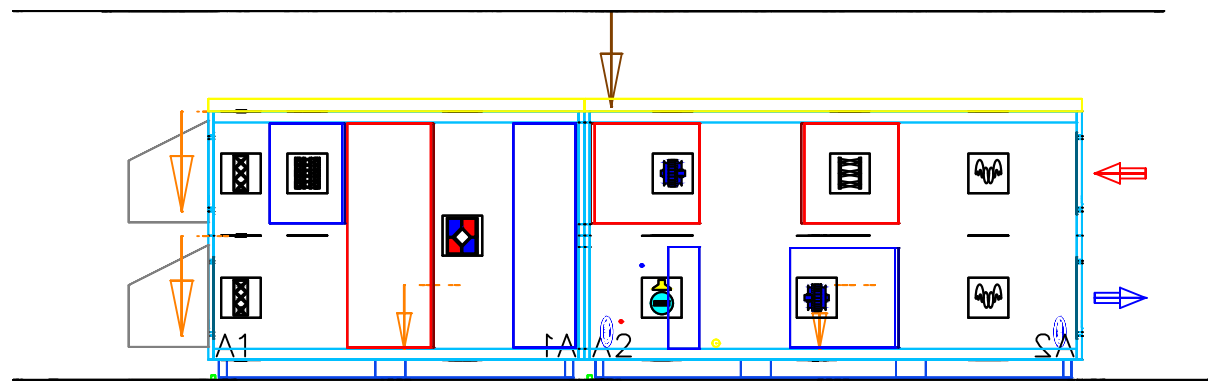
## Pamja nga siper



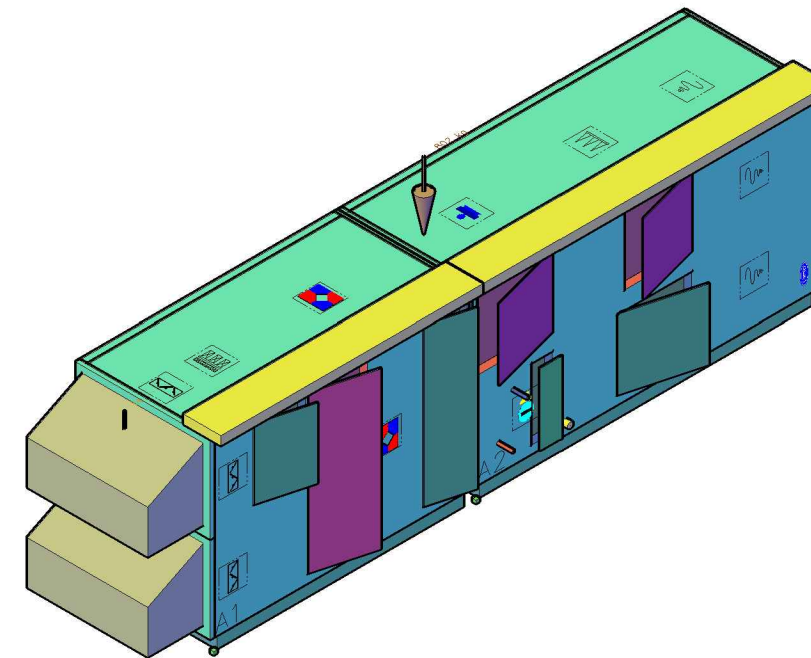
## Pamje Ballore



## Pamja anesore



## Pamje izometrike



**Porosites:**  
**ADISA -Agjencia e Ofrimit të Shërbimeve Publike të Integruara**



**InfraKonsult**  
 konsulence inzhinierike  
 Address: Rr. "Qemal Stafa", P.25, Ap. 4,hyrja 4, perballë Qendres Lincoln  
 Mob:+355 (0)68 90 10 844 / +355 (0)69 40 17 013  
 E-mail: infrikonsult@yahoo.com



RR. "SAMI FRASHERI", PAL. T.D.BALLKAN, SH1, AP.2, TIRANA, ALBANA  
 Tel: +355 4 22 22 554 / +355 4 24 30 195  
 Fax: +355 4 24 30 194  
 email: info@atelier4.al  
 www.atelier4.al

"HARTIMI I PROJEKT ZBATIMIT TE RIKONSTRUKSIONIT TE QENDRES SE OFRIMIT TE SHËRBIMEVE PUBLIKE TE INTEGRUARA NE LUSHNJE"

PAISJA AHU-SE

FAZA - PROJEKT ZBATIMI

SHKALLA 1: 100

Data: Qershor, 2019

VIZATIMI Nr: D\_(66)

DREJTOR PROJEKTI: Ing. Sulejman Shemsiu

PROJEKTUES:

Ing. Redi STRUGA  
 Ing. Sokol METOJA  
 Ing. Helidon Osmanaj  
 Ing. Agim Tabaku  
 Ark. Irida Totri  
 Ark. Lorena Mezin





**Kasete me dy drejtime  
Kodi - IDU5**

Kapaciteti ne ftohje 4.5kW  
Kapaciteti ne ngrohje 5.0kW  
Volumi i ajrit 850/670/550 m<sup>3</sup>/h  
220-240V/1Ph/50Hz  
Fuqia elektrike 92W



**Kasete me 4 drejtime  
Kodi - IDU1**

Kapaciteti ne ftohje 3.6kW  
Kapaciteti ne ngrohje 4.0kW  
Volumi i ajrit 521/409/314 m<sup>3</sup>/h  
220-240V/1Ph/50Hz  
Fuqia elektrike 56W



**Kasete me 4 drejtime  
Kodi - IDU4**

Kapaciteti ne ftohje 14.0kW  
Kapaciteti ne ngrohje 15.0kW  
Volumi i ajrit 1680/1335/1130 m<sup>3</sup>/h  
220-240V/1Ph/50Hz  
Fuqia elektrike 176W



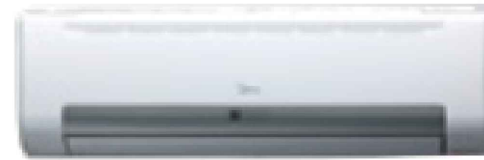
**Kondicioner Mural Kodi - IDU2**

Kapaciteti ne ftohje 2.8kW  
Kapaciteti ne ngrohje 3.2kW  
Volumi i ajrit 525/480/430 m<sup>3</sup>/h  
220-240V/1Ph/50Hz  
Fuqia elektrike 28W



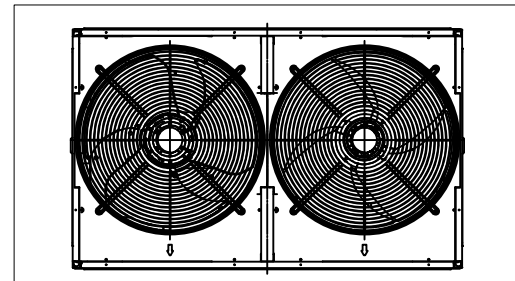
**Kondicioner Mural Kodi - IDU3**

Kapaciteti ne ftohje 2.2kW  
Kapaciteti ne ngrohje 2.6kW  
Volumi i ajrit 525/480/430 m<sup>3</sup>/h  
220-240V/1Ph/50Hz  
Fuqia elektrike 28W



**Kondicioner Split Mural Kodi - IDU6**

EER/COP 3.46/3.75 W/W  
Kapaciteti ne ftohje 2.7kW  
Kapaciteti ne ngrohje 3.0kW  
Volumi i ajrit 440/360/280/150 m<sup>3</sup>/h  
220-240V/1Ph/50Hz  
Fuqia elektrike 800W



**Njesi e jashteme kondicionimi VRF - Full DC inverter**

Kapaciteti ne ftohje 40.0kW  
Kapaciteti ne ngrohje 40.0kW  
Volumi i ajrit 12000 m<sup>3</sup>/h  
EER/COP 3.43/4.07kW/kW  
Numri i kompresoreve 2  
Gazi i punes R410A  
380-415V/3Ph/50Hz  
Fuqia elektrike 9.83kW

**Porosites:**  
**ADISA -Agjencia e Ofrimit të Shërbimeve Publike të Integruara**

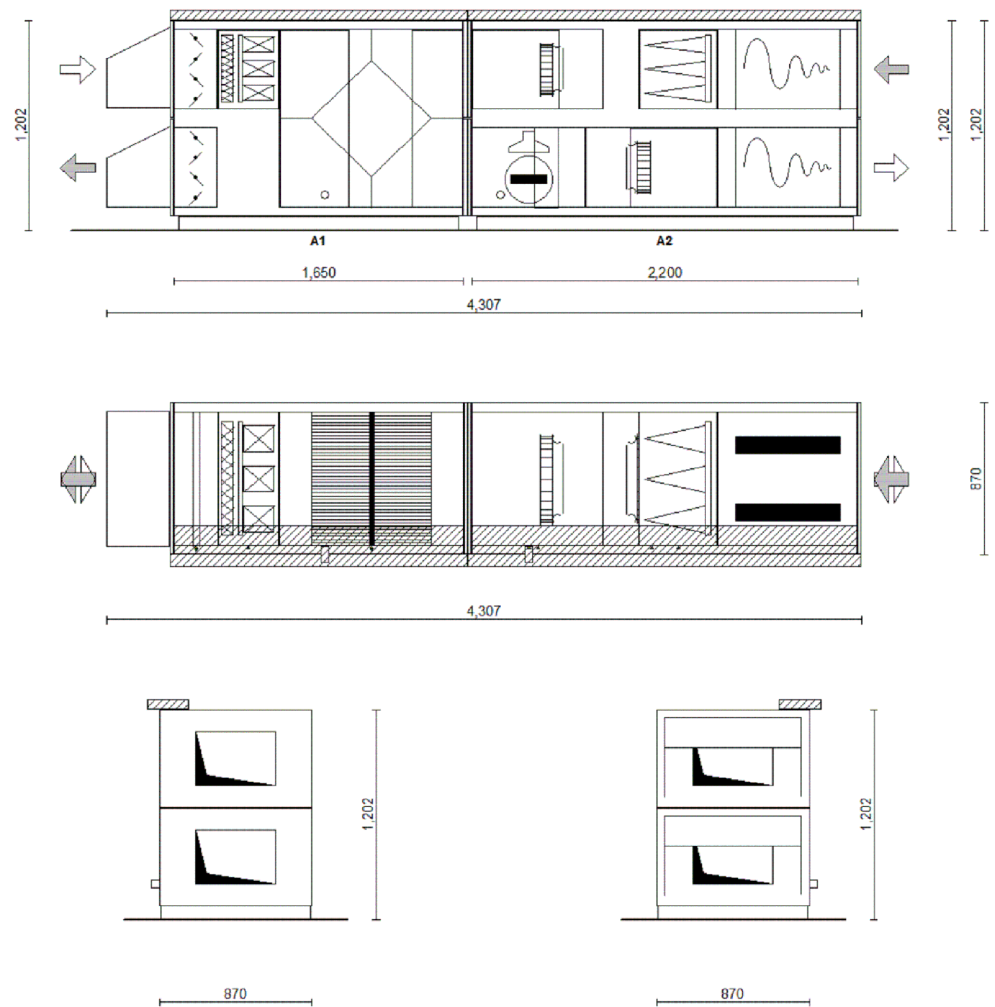
**InfraKonsult**  
Address: Rt. "Qemal Stafa", P.25, Ap. 4,hyrja 4, perballë Qendres Lincoln  
Mob:+355 (0)68 90 10 844 / +355 (0)69 40 17 013  
E-mail: [infraKonsult@yahoo.com](mailto:infraKonsult@yahoo.com)  
RR "SAMI FRASHERI", P.M. T.D.BALLKAN, SH1, AP.2, TIRANA, ALBANA  
TEL: +355 4 22 22 884 / +355 4 24 30 195  
Fax: +355 4 22 22 884  
email: [info@infraKonsult.com](mailto:info@infraKonsult.com)  
[www.infraKonsult.com](http://www.infraKonsult.com)

"HARTIMI I PROJEKT ZBATIMIT TE RIKONSTRUKSIONIT TE QENDRES SE OFRIMIT TE SHËRBIMEVE PUBLIKE TE INTEGROJARA NE LUSHNJE"  
SPECIFIKIMET TEKNIKE TE PAISJEVE

FAZA - PROJEKT ZBATIMI  
SHKALLA 1: 100      Data: Qershor, 2019  
VIZATIMI Nr: D\_(67)

DREJTOR PROJEKTI: Ing. Sulejman Shemsiu  
PROJEKTUES: Ing. Redi STRUGA, Ing. Sokol METOJA, Ing. Helidon Osmanaj, Ing. Agim Tabaku, Ark. Irida Totri, Ark. Lorena Mezini

# Njesi trajtimi ajri me zgjerim direkt sipas specifimimeve te meposhteme :



Flow rate : SUPPLY UNIT 2,000 m<sup>3</sup>/h / EXTRACT UNIT 1,800 m<sup>3</sup>/h (Frontal speed : 1.57 / 1.41 m/s)  
 (Filtration surface area / Filtration surface area)  
 Speed class V1 EN13053  
 AHU Assembly Delivery : Double stacked / External  
 Altitude : 80 m  
 Reference air conditions supply unit : 20 °C / 50 %(RH) / 1.19 kg/m<sup>3</sup>  
 Reference air conditions extract unit : 20 °C / 50 %(RH) / 1.19 kg/m<sup>3</sup>  
 Specific Fan Power v : 1.931 W/(m<sup>3</sup>/s), 0.54 W/(m<sup>3</sup>/h)

Winter fresh air reference temperature EUROVENT -1 °C  
 Mixing ratio 0.00  
 Designed for wet conditions  
 ERV\_2016, Subgroup 1 Energy class A  
 EN 1886-2007 CAL(R) -400 Pa / +400 Pa = 5.69 / 2.71 %  
 Internal leak flow rate = 0.1 % of supply air flow rate  
 PED 2014/68/EU Article 4.3

**Block A2 Double tunnel 408 kg with**  
 1 Baseframe  
 1 Mounted block  
 10 Polyester coated external skin (C3)

**1 sound attenuator**  
 Integrated baffles with a length : 600 mm

Layout

**1 filtration section**  
 Track mounted B  
 1 Cell type F7RB  
 Filtration Class (EN 779-2017)  
 Filtration Class (ISO16890) : ePM1 60% - ePM2.5 70%  
 Air pressure drops (Clean point) : 79 Pa  
 Pressure drop on the 3 fouling levels : Clean point 79 / Mid point 118 / Dirty point 158 Pa  
 All filters must be equipped with a visual device or monitoring by the control  
 Left face access in the direction of air  
 Pressure tappings (fitted)  
 Hinged door 450 mm

**1 Fan section (free wheel)**  
 Number of fan(s) : 1  
 Air flow rate : 1,800 m<sup>3</sup>/h 0.5 m<sup>3</sup>/s  
 Duct available pressure : 80 Pa  
 K-factor: 95  
 Requires a controller delivering a 0/10 V signal  
 Diameter of fan impeller : 0.31 m  
 Motor and fan efficiency: 54%  
 Impeller rotation speed: 1,839 rpm  
 Impeller rotation maximum speed: 3,640 rpm  
 Power input: 363.9 W  
 Specific Fan Power: 730 W/(m<sup>3</sup>/s), 0.20 W/(m<sup>3</sup>/h)

Single motor  
 Unit specifications:  
 Rated current: 4.00 A  
 Motor EC: 2.5 kW  
 Voltage: RL\_400V\_50HZ  
 Control voltage: 5.05 V  
 Cables (power, control and fault) exiting onto service panel.  
 Left face access in the direction of air  
 Layout  
 Pressure pick-up for air flow control

Hinged door 500 mm

**Block A1 Double tunnel 352 kg with**  
 1 Baseframe  
 1 Mounted block  
 7 Polyester coated external skin (C3)

**1 cross flow plate heat recuperator Fresh air bypass (Epoxy coated)**

SCX1  
 \*\*\* Performance WINTER \*\*\*  
 Efficiency: fresh air : 71.1 %  
 Efficiency in accordance with EN308 : 73.2 %  
 Recovery class H1 EN13053  
 Recovery capacity : 10.8 kW  
 Supply side  
 - Compute on air flow : 1,852 m<sup>3</sup>/h (-1 °C / 90 %(RH))  
 - air inlet t° / rh % : -1 °C / 90 %(RH)  
 - air outlet t° / rh % : 13.9 °C / 31.8 %(RH)  
 - Air pressure drops : 18.3 Dapa  
 Extraction side  
 - Compute on air flow : 1,800 m<sup>3</sup>/h (20 °C / 50 %(RH))  
 - air inlet t° / rh % : 20 °C / 50 %(RH)  
 - air outlet t° / rh % : 16.2 Dapa  
 \*\*\* Performance SUMMER \*\*\*  
 Efficiency: fresh air : 68.5 %  
 Recovery capacity : 3.675 kW  
 Supply side  
 - Compute on air flow : 2,111 m<sup>3</sup>/h (35 °C / 40 %(RH))  
 - air inlet t° / rh % : 35 °C / 40 %(RH)  
 - air outlet t° / rh % : 29.5 °C / 54.5 %(RH)  
 - Air pressure drops : 20.7 Dapa  
 Extraction side  
 - Compute on air flow : 1,847 m<sup>3</sup>/h (27 °C / 50 %(RH))  
 - air inlet t° / rh % : 27 °C / 50 %(RH)  
 - Air pressure drops : 17.4 Dapa  
 Damper Class 1 face and bypass dampers  
 Motorised control  
 Number of servo-motors : 1  
 Right face access in the direction of air  
 Piping on the right in the direction of air  
 Commands on the right in the direction of air  
 Motor servo(s) location : Outside  
 Layout  
 316 L stainless steel drain pan  
 Hinged door 300 mm  
 Hinged door 400 mm

**Damper inside**  
 Damper Class 3  
 Combined opposed dampers  
 Small rods driving  
 Motorised control  
 Number of servo-motors : 1  
 Left face access in the direction of air  
 Commands on the left in the direction of air  
 Motor servo(s) location : Outside  
 Configuration

1 Hood with bird mesh on fresh air sup. sect REP2  
 Maximum flow for canopy : 2,300 m<sup>3</sup>/h  
 Louvre: C3 polyester resin powder paint coating

**SUPPLY UNIT : Position 1HH**

1 Hood with bird mesh on fresh air sup. sect REP2  
 Maximum flow for canopy : 2,300 m<sup>3</sup>/h  
 Louvre: C3 polyester resin powder paint coating

**Block A1 Double tunnel 352 kg with**  
 1 Baseframe  
 1 Mounted block  
 7 Polyester coated external skin (C3)

**Damper inside**  
 Damper Class 3  
 Combined opposed dampers  
 Small rods driving  
 Motorised control  
 Number of servo-motors : 1  
 Right face access in the direction of air  
 Commands on the right in the direction of air  
 Motor servo(s) location : Outside  
 Configuration

**1 filtration section**  
 Track mounted, two stages, A + B  
 1 Cell type G4C  
 Filtration Class (EN 779-2012): G4  
 Filtration Class (ISO16890) : Coarse 80%  
 Air pressure drops (Clean point) : 105 Pa  
 Pressure drop on the 3 fouling levels : Clean point 105 / Mid point 158 / Dirty point 211 Pa  
 1 Cell type M5HEEC  
 Filtration Class (EN 779-2012): M5  
 Filtration Class (ISO16890) : ePM10 50%  
 Air pressure drops (Clean point) : 103 Pa  
 Pressure drop on the 3 fouling levels : Clean point 103 / Mid point 155 / Dirty point 206 Pa  
 All filters must be equipped with a visual device or monitoring by the control  
 Right face access in the direction of air  
 Pressure tappings (fitted)  
 Hinged door 350 mm

**1 cross flow plate heat recuperator Fresh air bypass (Epoxy coated)**  
 See EXTRACT UNIT.

**Block A2 Double tunnel 408 kg with**  
 1 Baseframe  
 1 Mounted block  
 10 Polyester coated external skin (C3)

**1 DX Cooling Coil**  
 6 Row(s), Fin space 2.5 mm Imposed  
 Access door to the separator  
 Copper tubes / Aluminium fins  
 Cooling capacity : 12 kW  
 Refrigerant : Refrigerant R410A  
 Evaporating temperature : 5 °C  
 air inlet t° / rh % : 30 °C / 40 %(RH)  
 air outlet t° / rh % : 15.2 °C / 86.7 %(RH)  
 Fluid pressure drop : 2,138 mmWC  
 Air pressure drops : 105 Pa  
 Air speed : 2.92 m/s  
 Calibrated frame with aluminium media droplet eliminator  
 Air pressure drops : 26 Pa  
 Slide mounting  
 connection Circuit (1) : Smooth copper 12.7 (1/2")  
 Fluid content : 2.92 l  
 Right face access in the direction of air  
 Piping on the right in the direction of air  
 Layout  
 Stainless steel drain pan

**1 Fan section (free wheel)**  
 Number of fan(s) : 1  
 Air flow rate : 2,000 m<sup>3</sup>/h 0.5556 m<sup>3</sup>/s  
 Duct available pressure : 130 Pa  
 K-factor: 95  
 Requires a controller delivering a 0/10 V signal  
 Diameter of fan impeller : 0.31 m  
 Motor and fan efficiency : 58%  
 Impeller rotation speed : 2,403 rpm  
 Impeller rotation maximum speed : 3,640 rpm  
 Power input : 706.2 W  
 Specific Fan Power : 1,274 W/(m<sup>3</sup>/s), 0.35 W/(m<sup>3</sup>/h)  
 Single motor  
 Unit specifications:  
 Rated current : 4.00 A  
 Motor EC : 2.5 kW  
 Voltage : TRI\_400V\_50HZ  
 Control voltage : 6.60 V  
 Cables (power, control and fault) exiting onto service panel.  
 Right face access in the direction of air  
 Layout  
 Pressure pick-up for air flow control  
 Hinged door 500 mm  
**1 sound attenuator**  
 Integrated baffles with a length : 600 mm  
 Layout

**Porosites:**  
**ADISA -Agjencia e Ofrimit të Shërbimeve Publike të Integruara**

**InfraKonsult**  
 Address: Rt. "Qemal Stafa", P.25, Ap. 4,hyrja 4, perballë Qendres Lincoln  
 Mob:+355 (0)68 90 10 844 / +355 (0)69 40 17 013  
 E-mail: infrikonsult@yahoo.com  
 RR "SAMI FRASHERI", PALI T.D.BALLKAN, SH1, AP.2, TIRANA, ALBANA  
 Tel: +355 4 22 12 134 / +355 4 24 30 195  
 Fax: +355 4 22 12 134  
 Email: info@infrikonsult.al  
 www.infrikonsult.al

"HARTIMI I PROJEKT ZBATIMIT TE RIKONSTRUKSIONIT TE QENDRES SE OFRIMIT TE SHËRBIMEVE PUBLIKE TE INTEGROARA NE LUSHNJË"  
 SPECIFIKIMET TEKNIKE TE AHU-SE

FAZA - PROJEKT ZBATIMI  
 SHKALLA 1: 100  
 Data: Qershor, 2019  
 VIZATIMI Nr: D\_(68)

DREJTOR PROJEKTI: Ing. Sulejman Shemsiu  
 PROJEKTUES: Ing. Redi STRUGA, Ing. Sokol METOJA, Ing. Helidon Osmanaj, Ing. Agim Tabaku, Ark. Irida Totri, Ark. Lorena Mezin